

2021 -2022 Highlights Report to Our School Division Community



**Grande Prairie
Public School
Division**
Every Student Succeeds

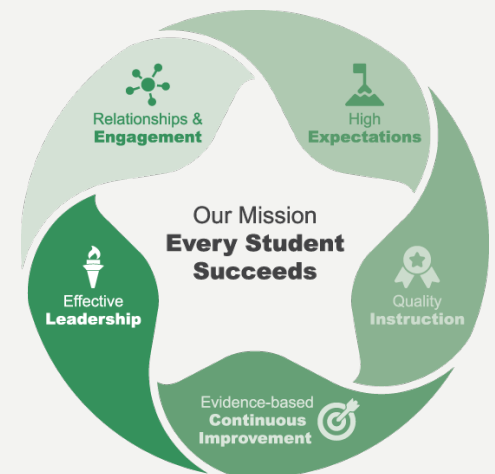


Roy Bickell Public School

Universal Guiding Principles

For everything we decide and do, we will hold ourselves accountable and we will ask:

1. Is it good for students?
2. Will it build trust and good relationships?
3. Will it help us improve?
4. Is it a responsible thing to do?
5. Are we being open, honest, and ethical?



Education Plan Priorities & Results

Message from the Superintendent of Schools Mr. Sandy McDonald

The division assurance cycle reflects the work of our schools to support optimum learning for all students. I am proud of the efforts of every member of our jurisdiction who makes the alignment and implementation of individual, school, and division plans evident in all they do. Student success occurs because of the planning and intentional action that occurs at all levels in our division. The priority areas and desired outcomes identified are our focus for the next three years and the strategies identified will guide our work in all schools.

The division results represent the initial success meeting our desired outcomes. Consistent measures will be reported over the next three years to provide evidence of our continuous improvement.

2021 – 2022 Spotlight

The Division 3-year high school completion rate was 80.3%. This rate has continued to improve.



For more information about the Grande Prairie Public School Division and its programs, please see complete Reports to the Community online at:

[Division Planning - Grande Prairie Public School Division \(gppsd.ab.ca\)](https://www.gppsd.ab.ca).

Our Commitment to Our School Division Community

For the next three years, our Division's Education Plan will include specific focus on achieving the following priorities:

1. Continuous Improvement in student growth and achievement.
2. Continue to improve our high school graduation rates.
3. Continue to eliminate the systemic achievement gap between First Nations, Métis and Inuit students and all other students in GPPSD.

Fall 2022 Alberta Education Assurance Measures Overall Summary

Assurance Domain	Measure	The Grande Prairie School Division			Alberta			Measure Evaluation		
		Current Result	Prev Year Result	Prev 3 Year Average	Current Result	Prev Year Result	Prev 3 Year Average	Achievement	Improvement	Overall
Student Growth and Achievement	Student Learning Engagement	84.0	86.2	n/a	85.1	85.6	n/a	n/a	n/a	n/a
	Citizenship	76.3	80.2	81.0	81.4	83.2	83.1	Intermediate	Declined Significantly	Issue
	3-year High School Completion	80.3	77.7	72.0	83.2	83.4	81.1	Intermediate	Improved Significantly	Good
	5-year High School Completion	80.3	77.1	78.0	87.1	86.2	85.6	Low	Maintained	Issue
	PAT: Acceptable	61.7	n/a	70.1	67.3	n/a	73.8	n/a	n/a	n/a
	PAT: Excellence	11.3	n/a	15.3	18.0	n/a	20.6	n/a	n/a	n/a
	Diploma: Acceptable	72.5	n/a	77.8	75.2	n/a	83.6	n/a	n/a	n/a
	Diploma: Excellence	12.3	n/a	13.0	18.2	n/a	24.0	n/a	n/a	n/a
Teaching & Leading	Education Quality	88.7	89.9	90.0	89.0	89.6	90.3	High	Declined	Acceptable
Learning Supports	Welcoming, Caring, Respectful and Safe Learning Environments (WCRSLE)	82.3	86.5	n/a	86.1	87.8	n/a	n/a	n/a	n/a
	Access to Supports and Services	76.9	78.7	n/a	81.6	82.6	n/a	n/a	n/a	n/a
Governance	Parental Involvement	75.5	77.1	81.1	78.8	79.5	81.5	Intermediate	Declined Significantly	Issue

The 2020/21 administration of the AEA survey was a pilot; therefore, previous year, 3 year averages and measure evaluations are not available. Provincial Achievement Exams (PAT) and Diploma Exams were impacted by the COVID-19 pandemic in 19/20, 20/21 and Jan 2022. 19/20, 20/21 and 21/22 are not included in the rolling 3-year average.

Priority 1: Teaching and Learning

Overall Satisfaction, Engagement, and Expectations

We were encouraged to see that most results in this area were maintained. Student results in some of the measures decreased slightly. The Division and schools will be engaging with students in 2022-2023 to learn more about these results. We are very grateful for the work of our teachers and school leaders in 2021-2022, supporting continued student transitions between in-person and online, keeping communication with parents a priority, and focusing on the continuity of student learning.

High School Completion

The work of our teachers and leaders to provide students multiple pathways to high school completion continues to support an increase in completion rates. Acceptable Standard on Diploma Exam results for six of the eleven exams exceeded the provincial average. In 2022-2023 we continue to focus on strategies at all grade levels to support student readiness for high school completion.

Priority 2: Leadership

Leadership Practices Improve Staff and Student Learning

The term evidence is used to describe multiple sources of data. The use of evidence by teachers, principals, and vice principals to support effective planning and school decision making has a positive impact on student growth and achievement. School leaders continue to focus on engaging staff, students and parents to review evidence of how students are doing. This information is used to identify priorities and is reflected in school and division education plans. School leadership teams have been focused on supporting teacher planning, assessment, and instruction. The Division Optimum Learning Framework was developed in 2021-2022 to support leader and teacher focus on student instruction.

Indigenous Foundational Knowledge

Indigenous Liaisons provide valuable support to our students and families. The hiring of an Indigenous Program Coordinator will support a three-year plan focused on embedding Truth and Reconciliation, applying foundational knowledge, and Indigenous perspectives in classrooms.

Priority 3: Inclusion

Welcoming, Caring, Respectful, and Safe Learning Communities

We are pleased to see the high rates of return on our division surveys and results show our schools are seen as safe and caring. Maintaining a welcoming, caring, respectful and safe environment and supporting the emotional and physical well-being of all students and staff is a priority.

The Division's Mental Health Model builds consistency of support for students. The Wellness Committee

remains committed to provide professional learning to staff. In 2021-2022 Dr. Greg Wells presented and monthly wellness videos were embedded into staff meetings.

Our Nutrition Program, funded by Alberta Education, provides K-8 students with access to a healthy lunch each day. In 2021-2022 over 25,000 lunches were provided to students in K-8.

Helping all students feel a sense of belonging is a foundational

goal, as is ensuring all students have access to a continuum of supports and services to meet their programming needs.

Parental Engagement

The Division Assurance survey is one way we engage with our school communities. Decisions on individual student programming are made in collaboration between parents and the school. Monthly School Council meetings allow for parents to advise the principal and provide feedback on School Education Plans.